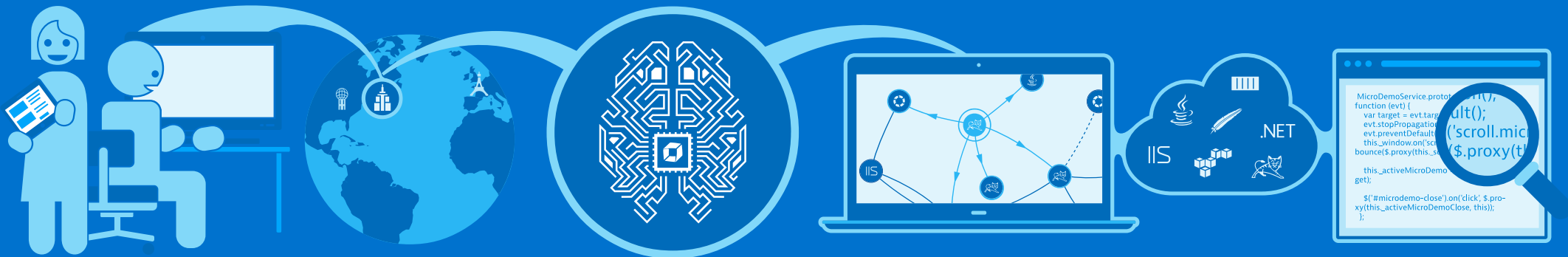




OpenStack Monitoring & Troubleshooting

OpenStack, Japan

July 21, 2017



APM

Application Performance Management





9000+ Customer

Leader in the APM Market



9000+ Customer
Leader in the APM Market



Dirk Wallerstorfer
Technology Lead OpenStack

dirk.wallerstorfer@dynatrace.com
[@wall_dirk](https://twitter.com/wall_dirk)



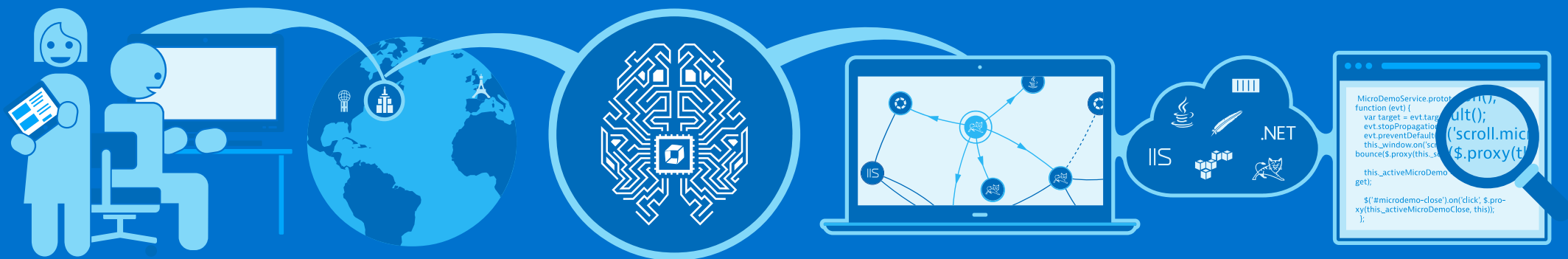
Daisuke Akane
Sales Engineer

daisuke.akane@dynatrace.com

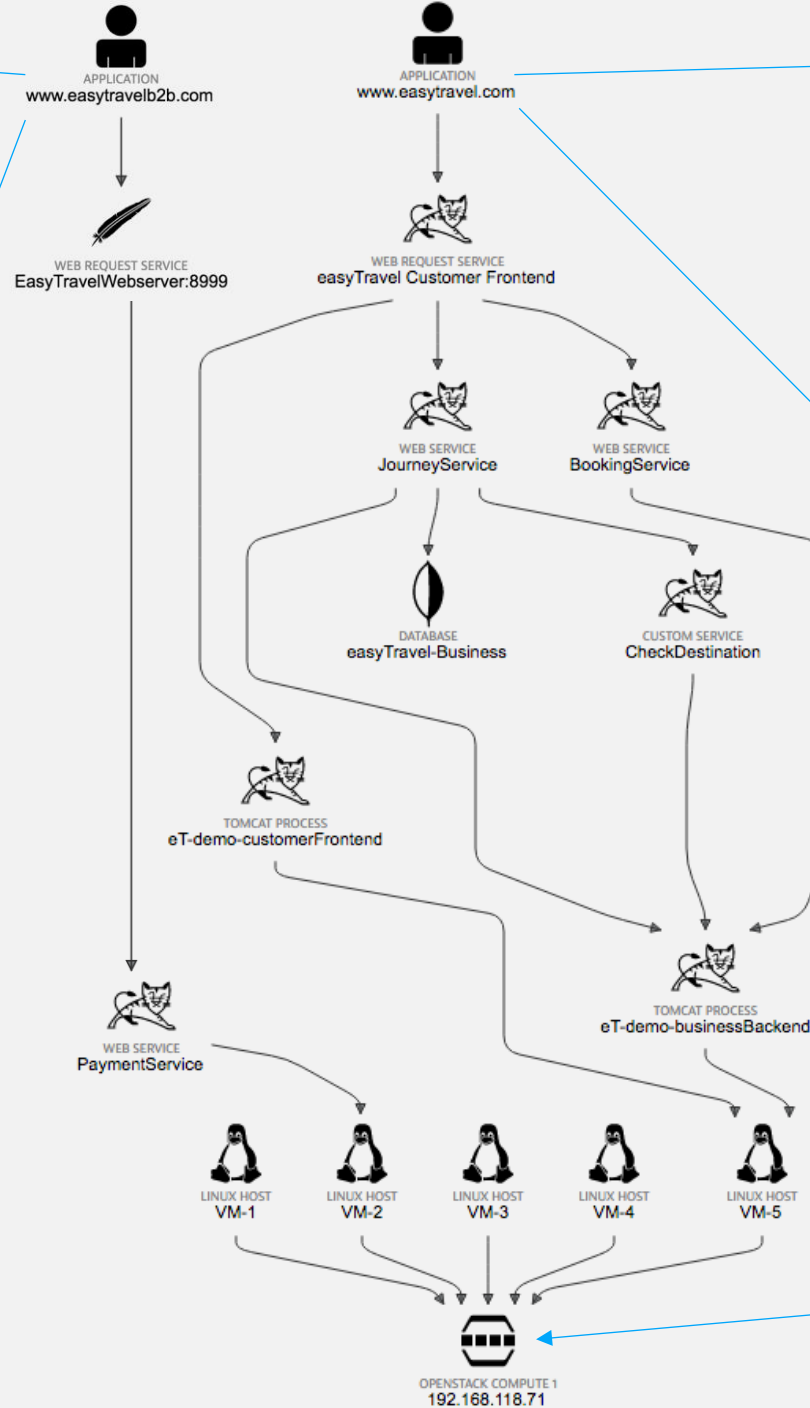
OpenStack

OpenStack + Dynatrace APM

Full Stack Monitoring



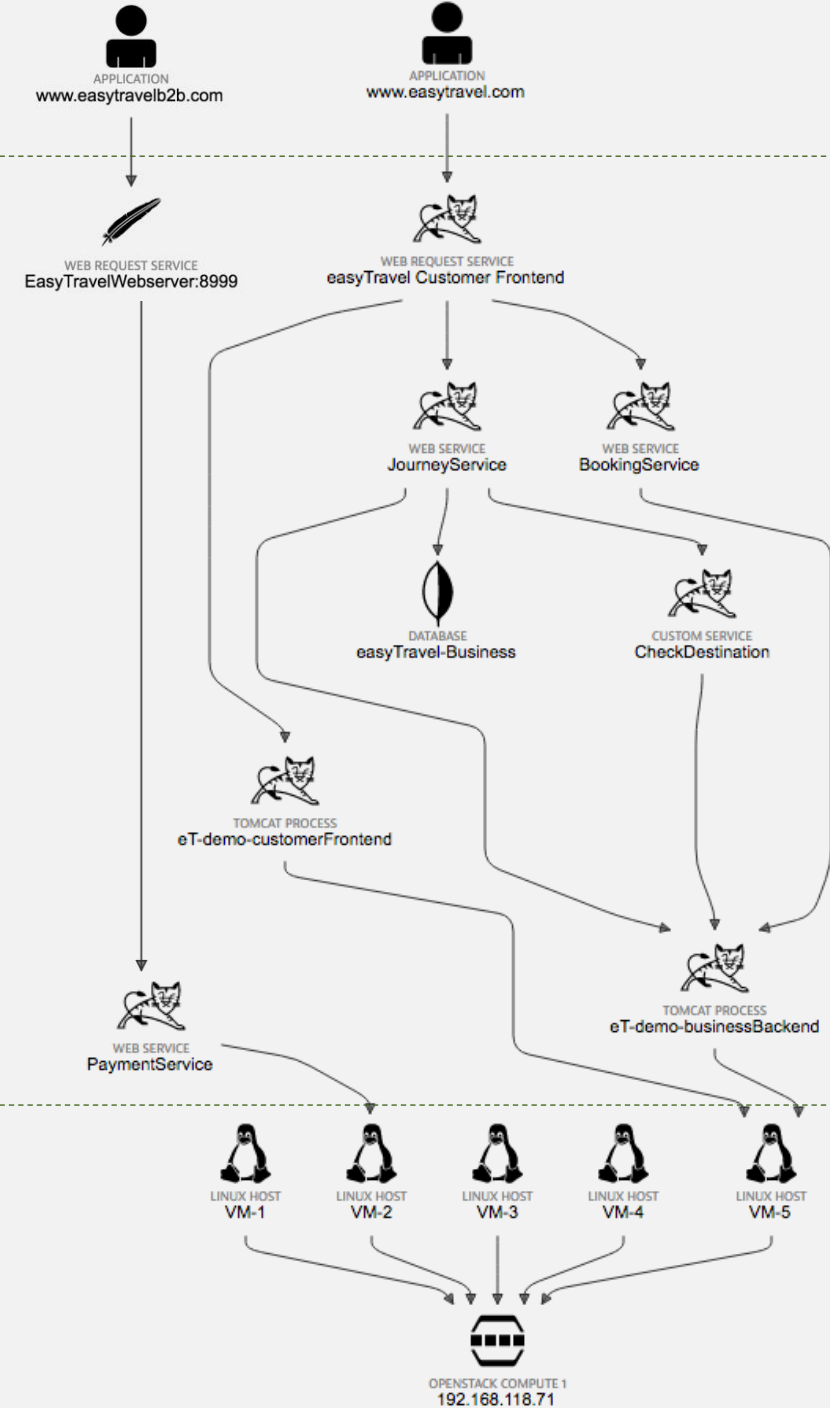
Welcome to the easyTravel Administration Portal

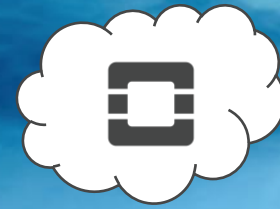
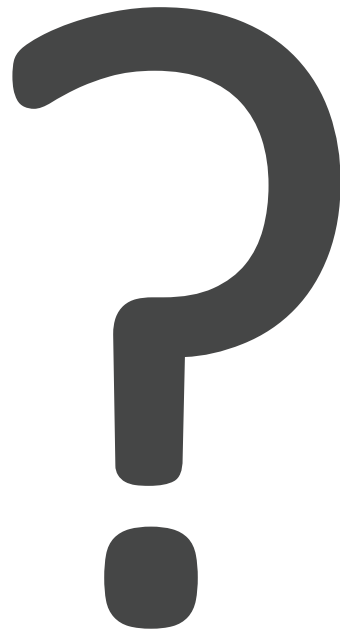


UX is important!

Cloud is all about applications

Hello, I'm cloud





NOVA

an OpenStack Community Project



NEUTRON

an OpenStack Community Project



GLANCE

an OpenStack Community Project



KEYSTONE

an OpenStack Community Project

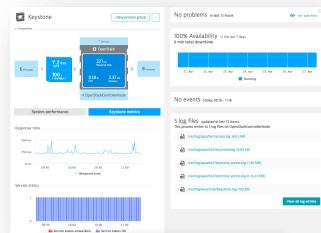


CINDER

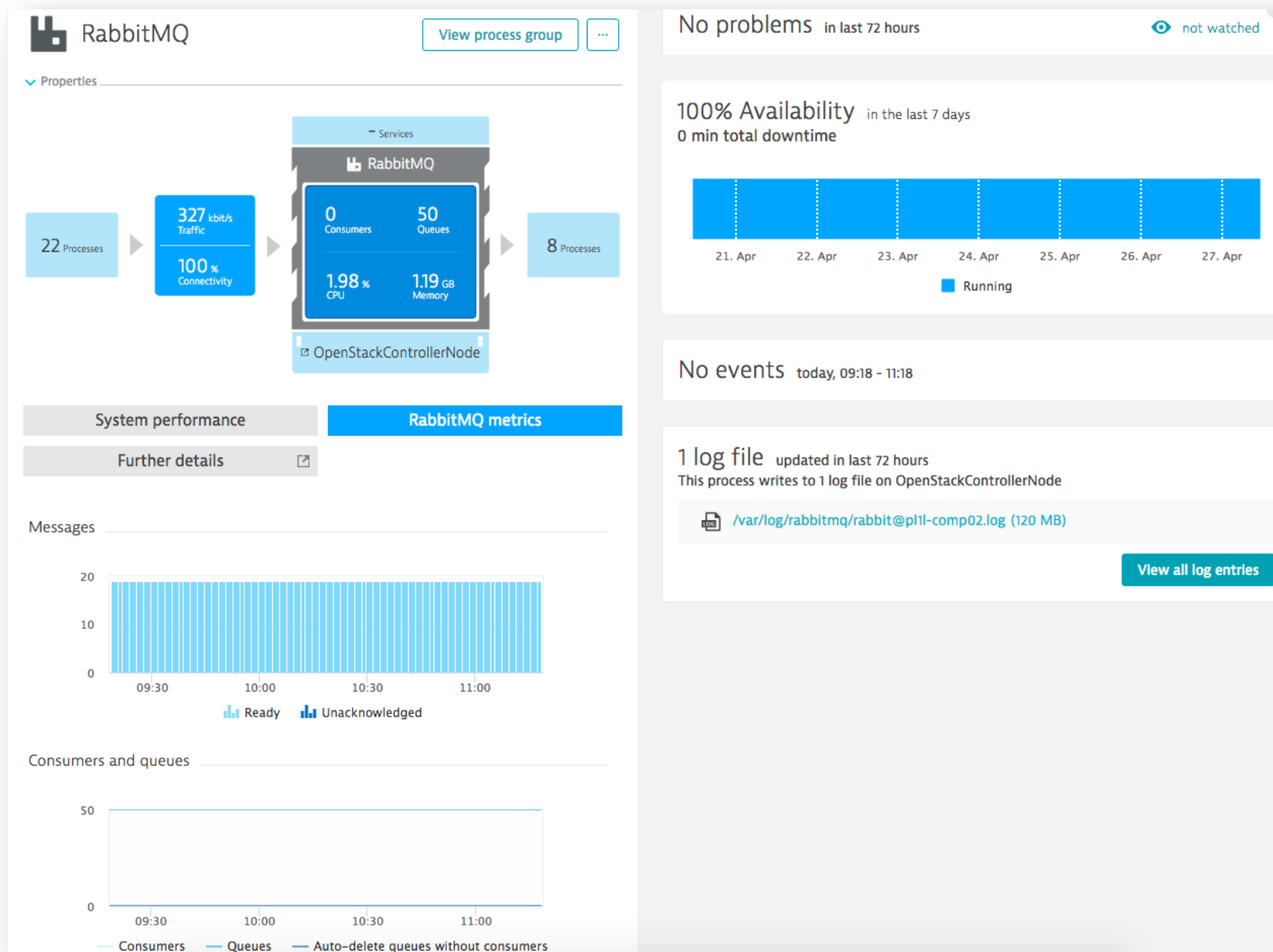
an OpenStack Community Project







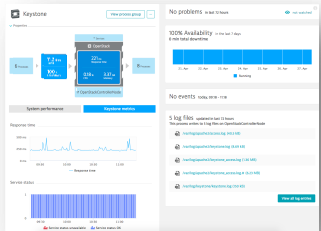
OpenStack service availability/performance



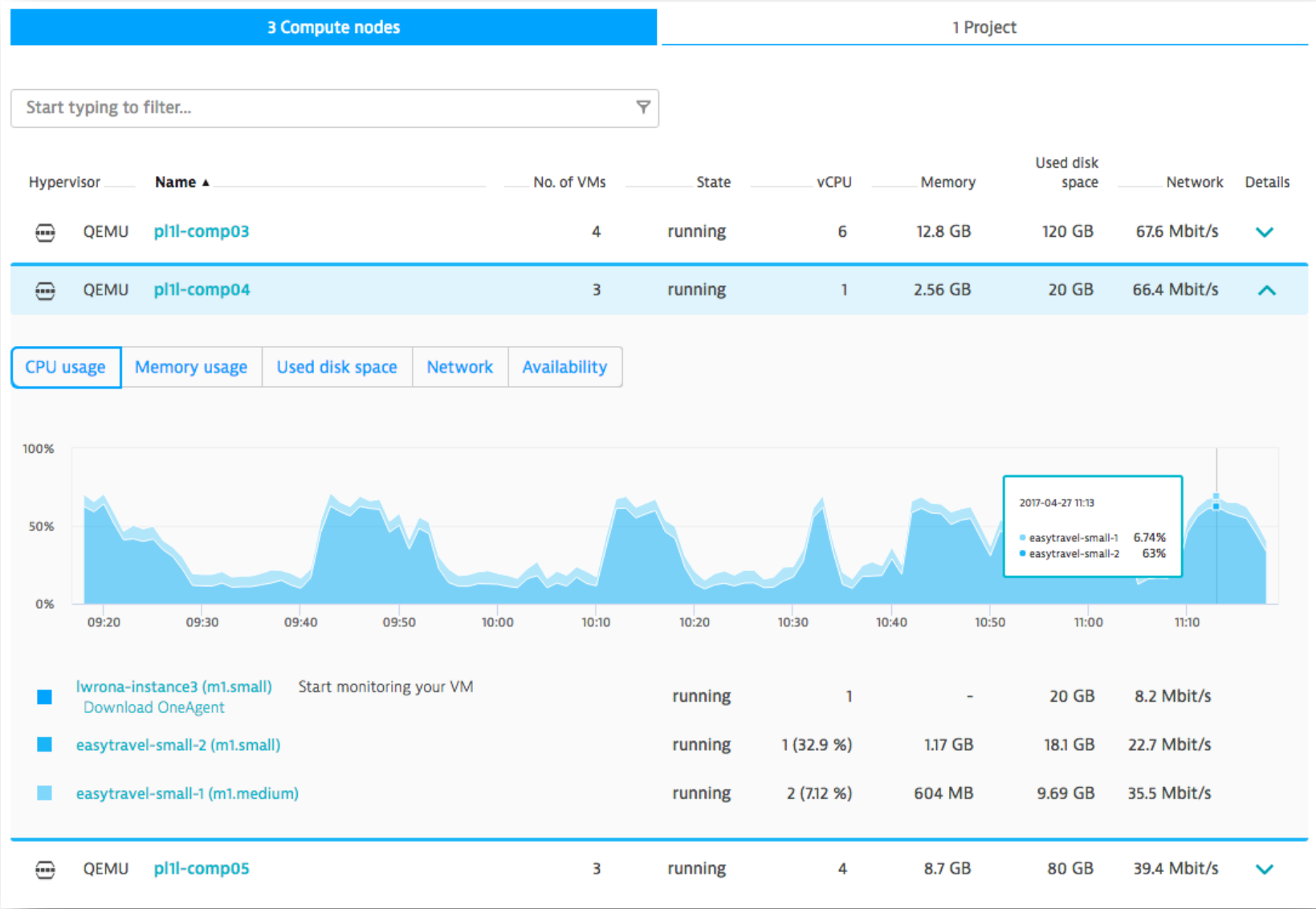
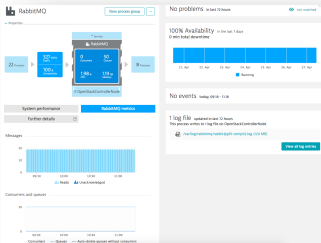


Resource capacity and utilization

OpenStack service availability/performance

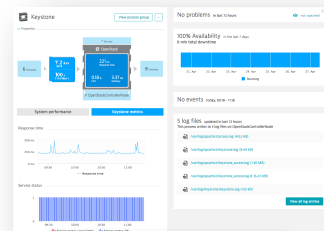


Supporting services

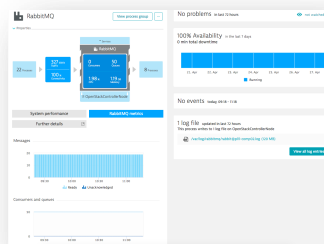




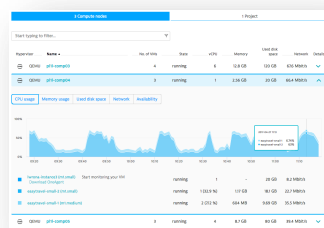
Log analytics



OpenStack service availability/performance



Supporting services



Resource capacity and utilization

Log viewer

Here you can browse through the contents of individual process log files or search selected log files using keywords and filtering. Search queries can be saved and reused later. Log results can be returned in either raw or aggregated form.

Search for text pattern in selected log files using [advanced query language](#) (or leave blank to return all results):

For example, ("internal exception" OR error) AND NOT repeat*

Selected log files:

5 logs on Keystone running on OpenStackControllerNode selected (7.9 MB)

[Change selection](#)

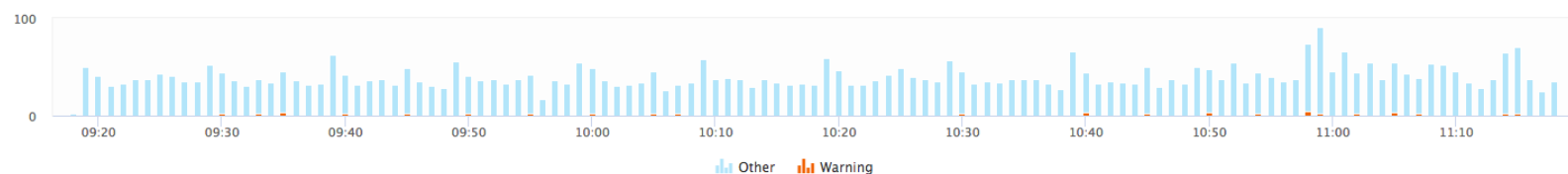
[Download log files](#)

[Display log](#)

Logs [summarized](#) to 22 groups. View chart by [log level](#)

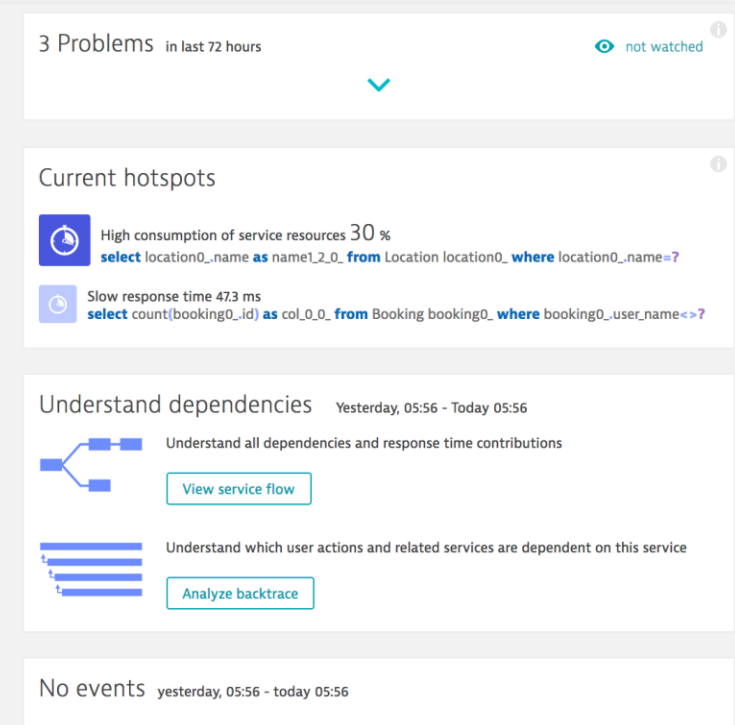
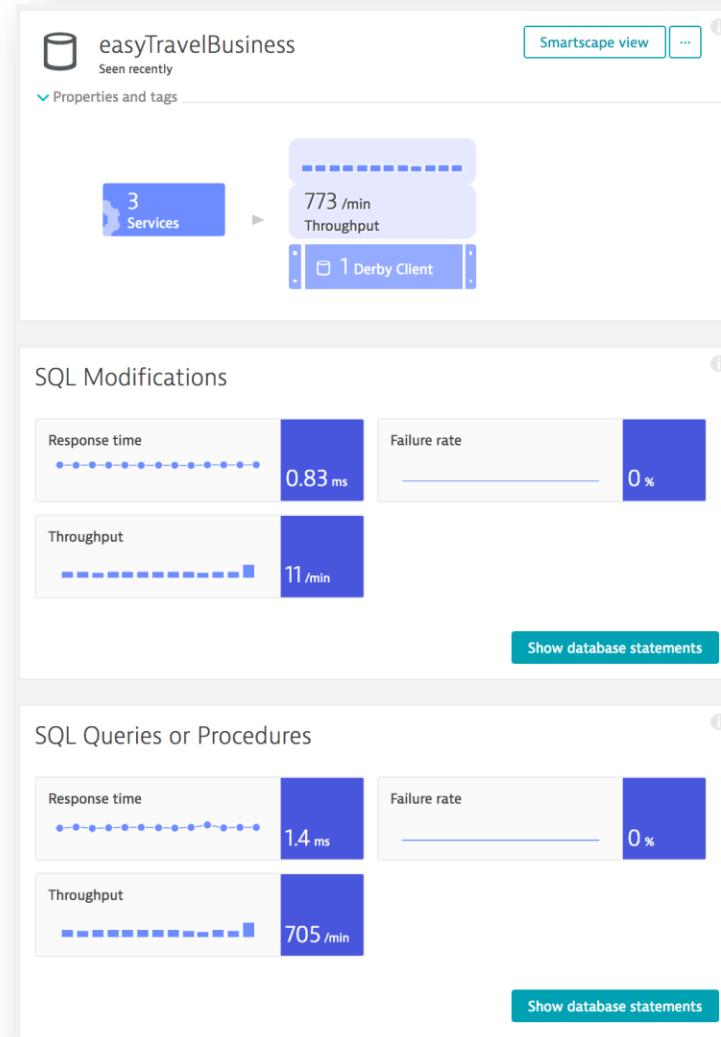
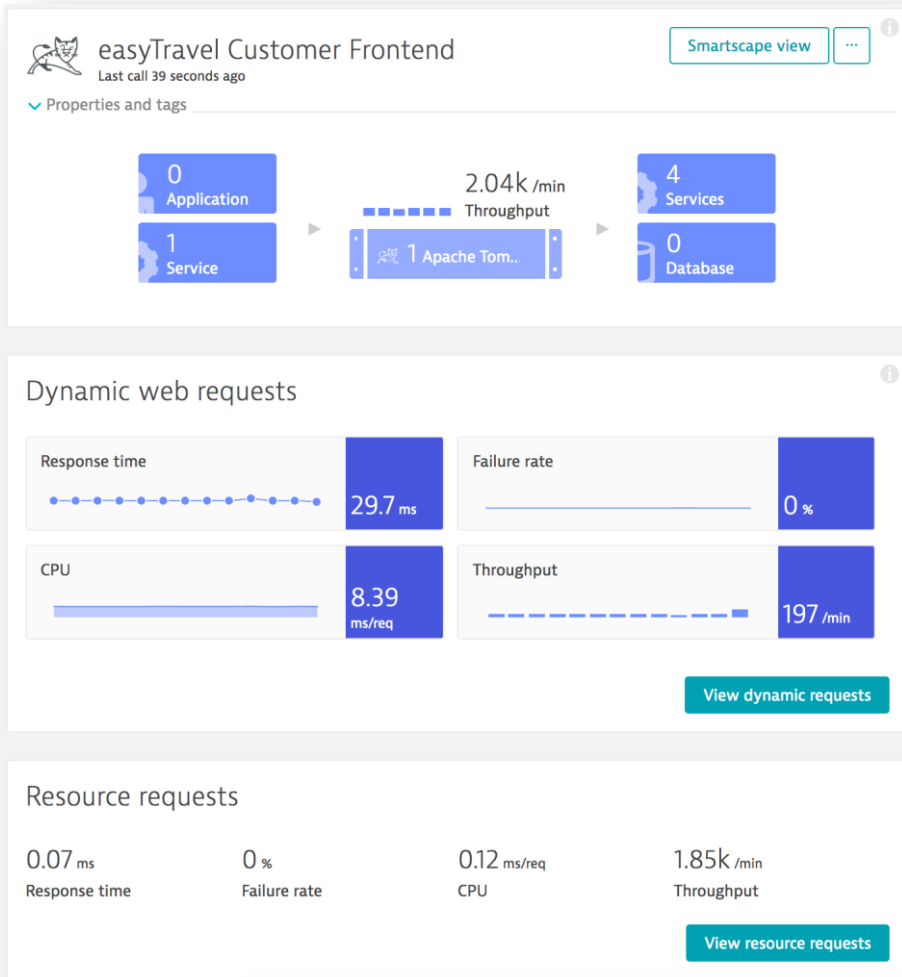
[Share](#)

[Export results](#)

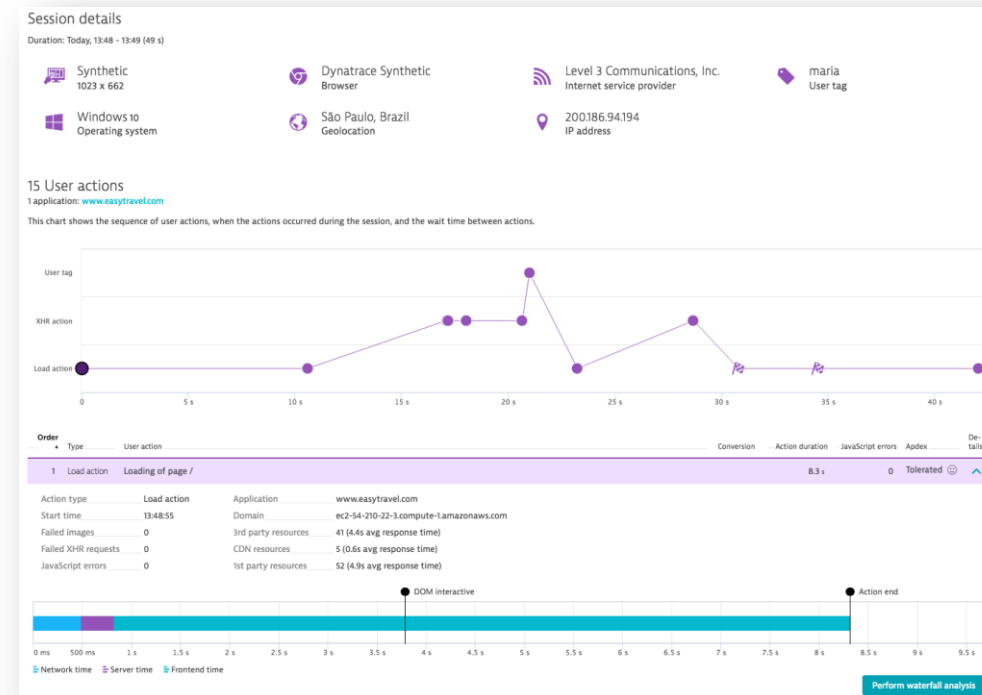
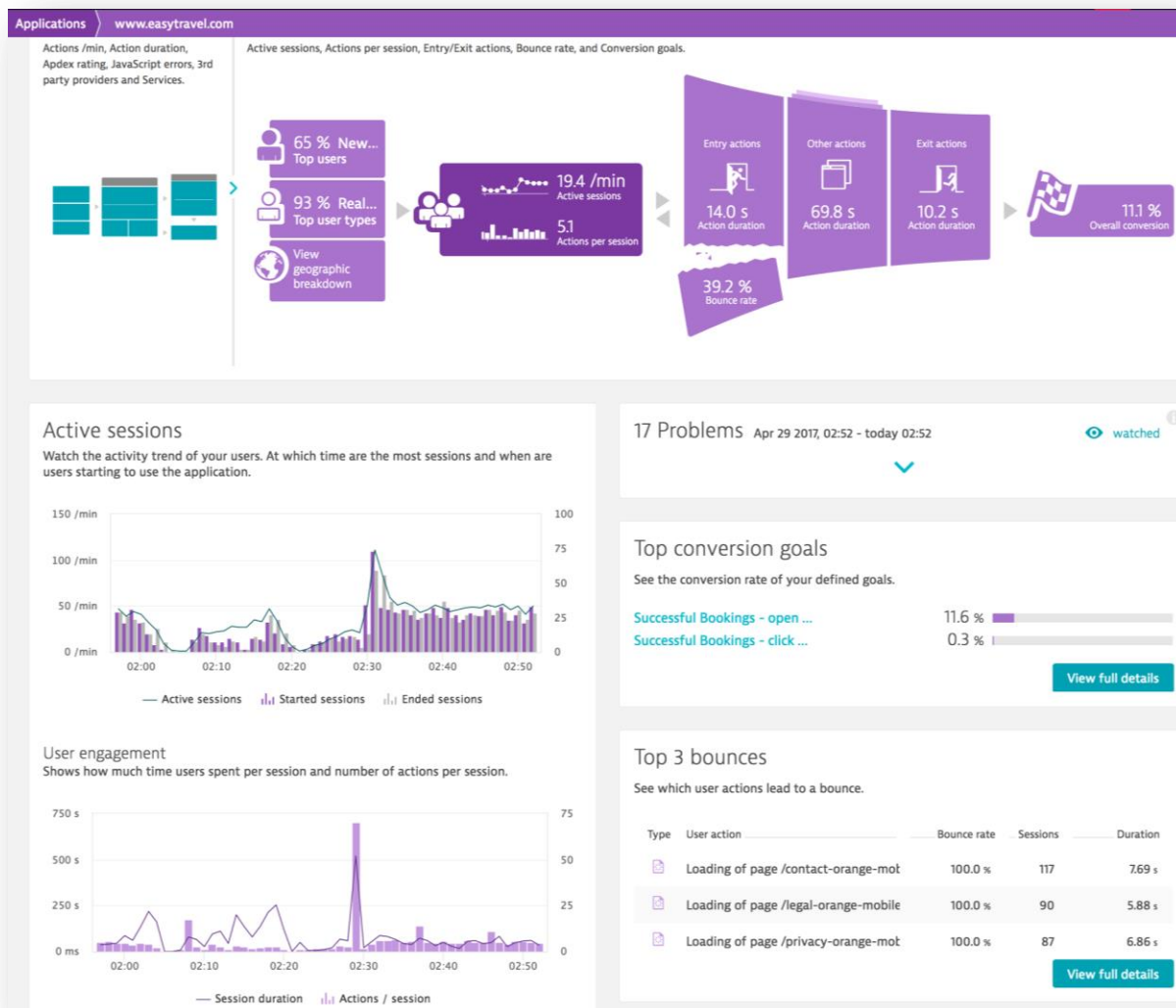


#	Level	Count	Source	Signature	
1	warning	19	(oslo_log.versionutils): 2017-04-27 0*	WARNING Deprecated: * of the v2 Authentication APIs is deprecated as of Mitaka in favor of a similar function in the v3 Authentication APIs.	✓
2	warning	14	(oslo_log.versionutils): 2017-04-27 0*	WARNING Deprecated: *ts of the v2 API is deprecated as of Mitaka in favor of a similar function in the v3 API and may be removed in Q.	✓
3	warning	5	(keystone.common.wsgi): 2017-04-27 08*	WARNING Authorization failed. The request you have made requires authentication. from 172.18.160.67	✓
4	warning	2	(keystone.common.manager): 2017-04-27 0*:00*:02*	WARNING Deprecated: Direct import of driver 'keystone.token.persistence.backends.sql.Token' is deprecated as of Liberty in favor of its endpoint from 'keystone.token.persistence' and may be removed in N.	✓
5	warning	1	(keystone.common.wsgi): 2017-04-27 08:58:29,124	WARNING Could not find user: lwrona_admin	✓
6		4120	172.18.160.67 -- [27/Apr/2017:0* +0000]	"GET /v3/auth/tokens HTTP/1.1" 200 5* "-" "python-keystoneclient"	✓
7		243	172.18.160.67 -- [27/Apr/2017:0* +0000]	"POST /v*/tokens HTTP/1.1" * "-" "*keystoneauth1/2.4.1 python-requests/2.9.1 CPython/2.7.12"	✓

Cloud is all about applications



Celebrate the power of the individual



Correlation

- Correlation is a statistical measure that indicates the extent to which two or more variables fluctuate together.



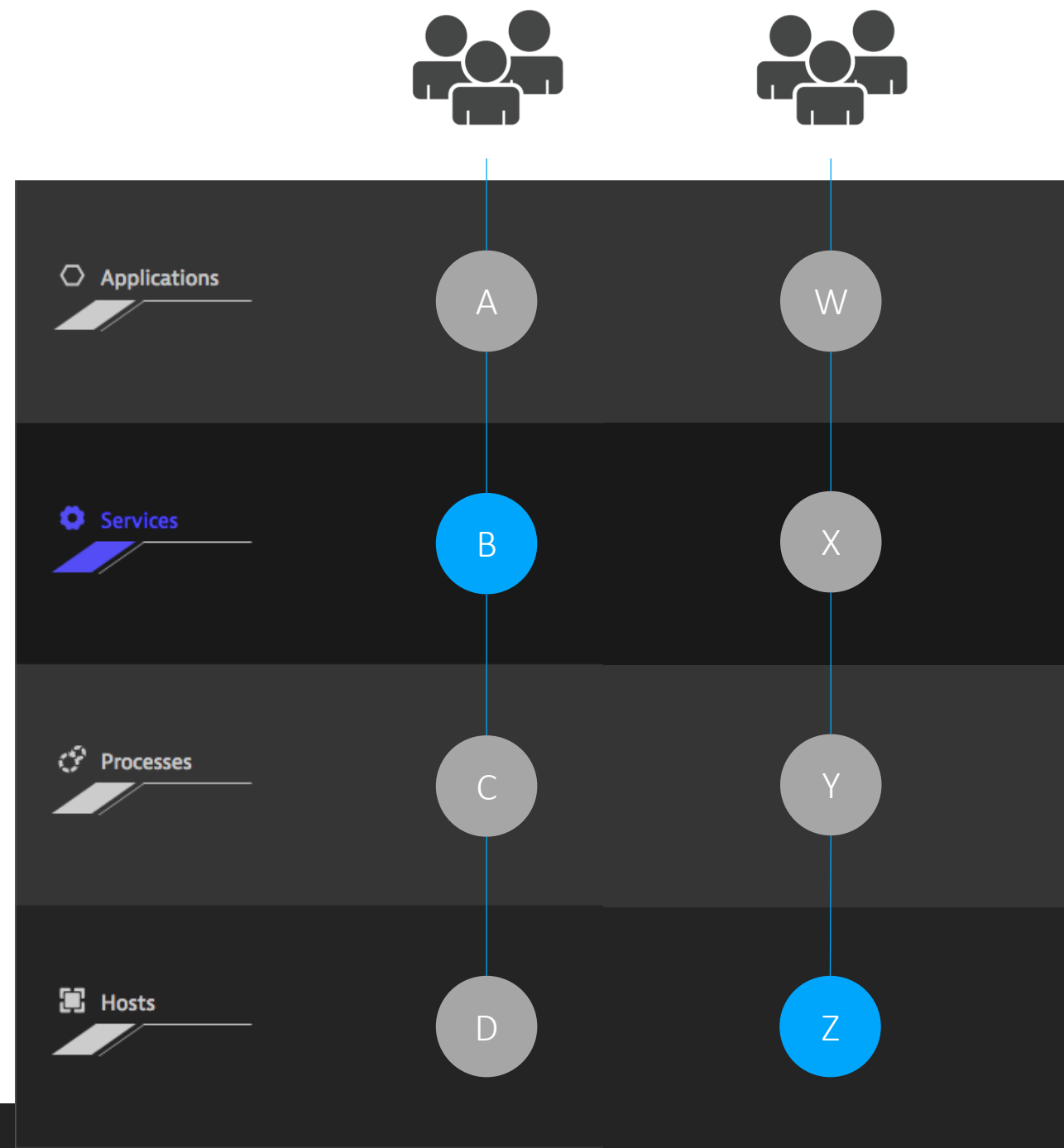
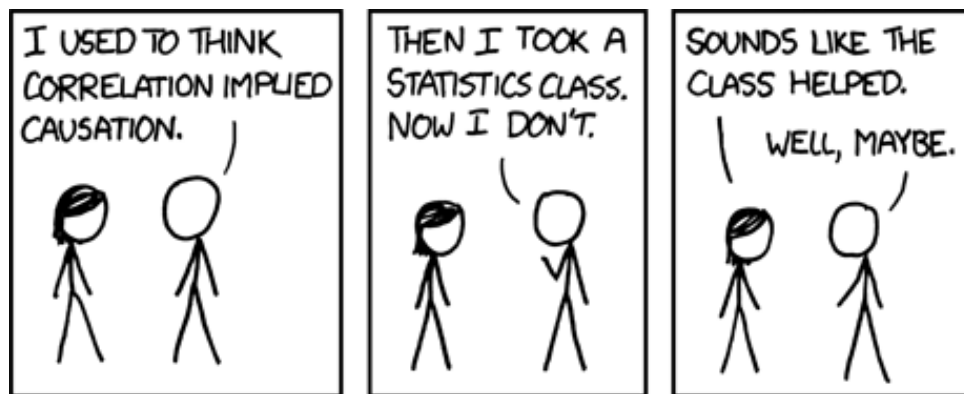
Correlation doesn't imply causation

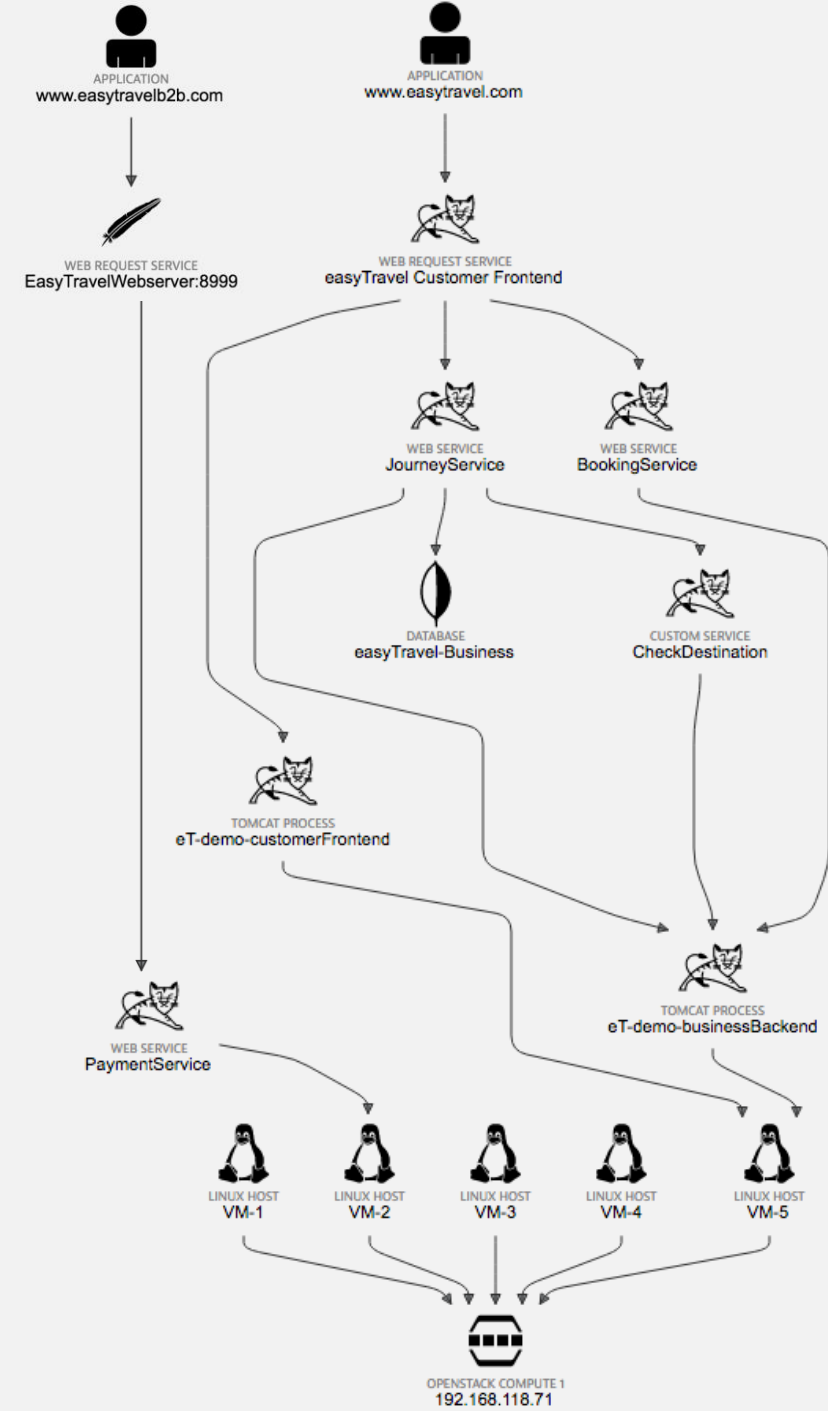
B

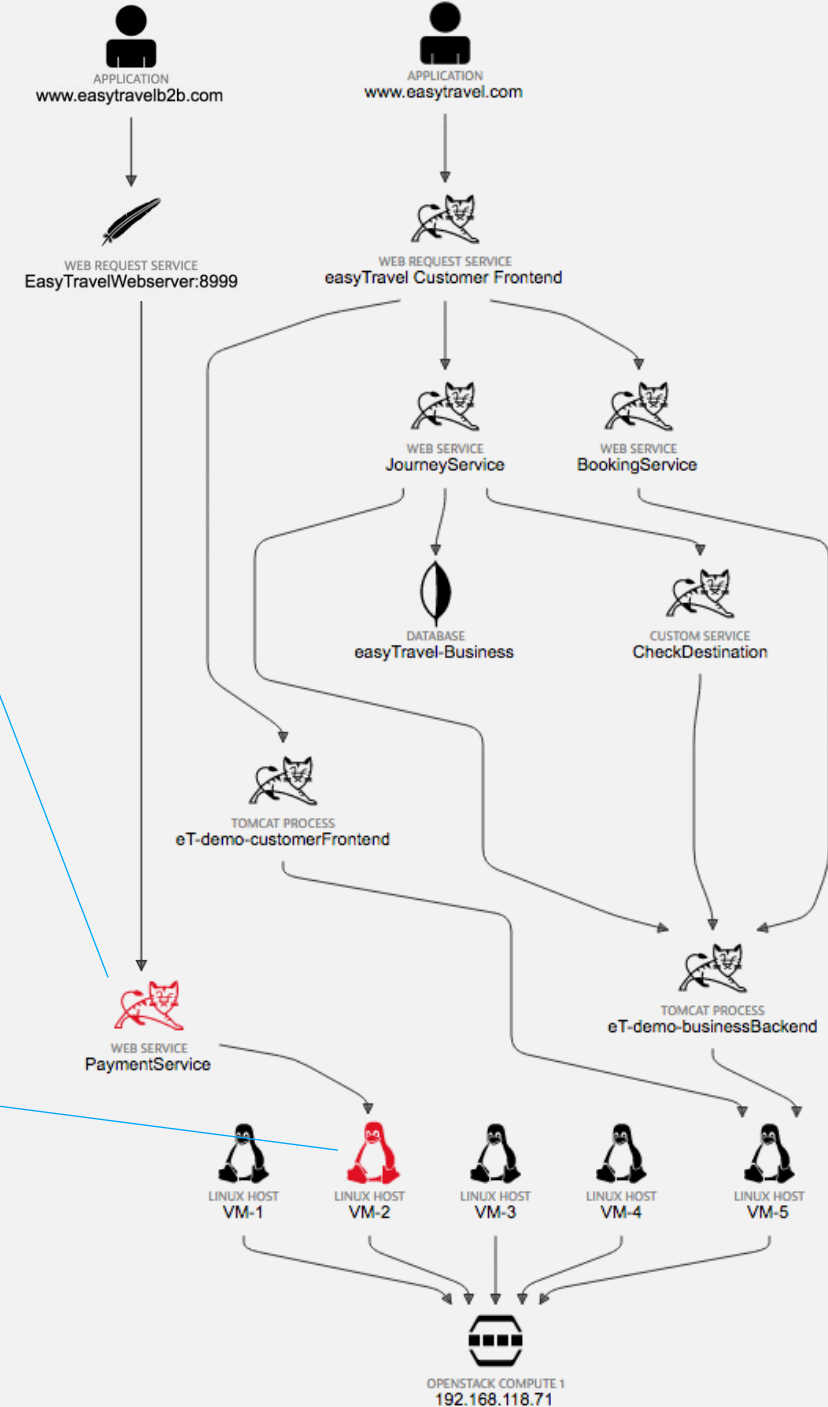
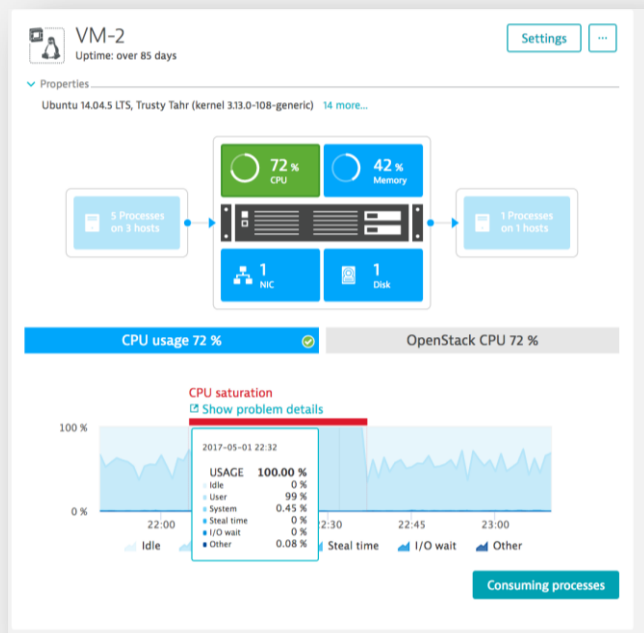
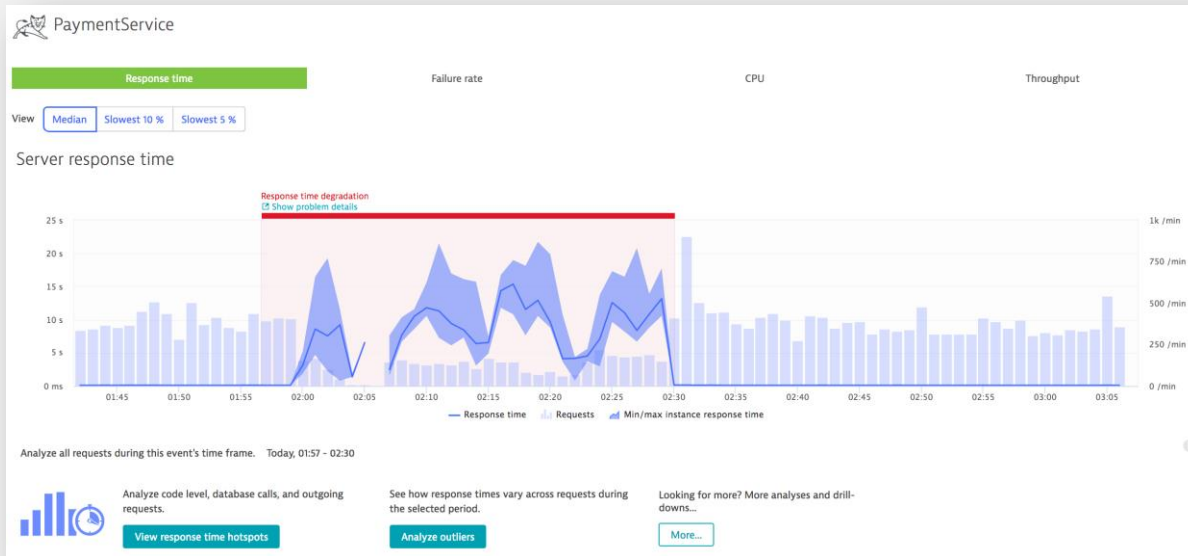
BookingService response time
increases by 2 seconds

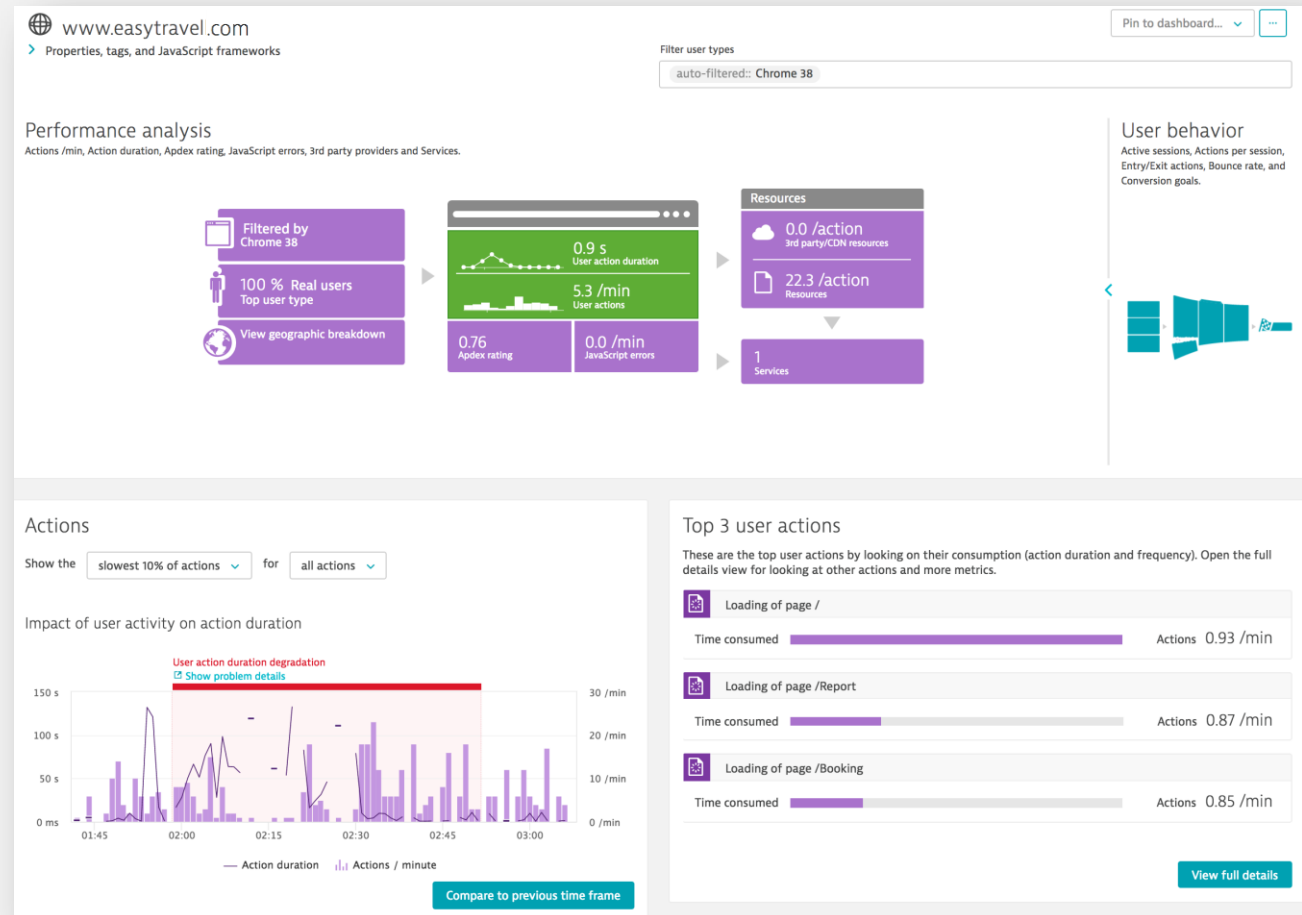
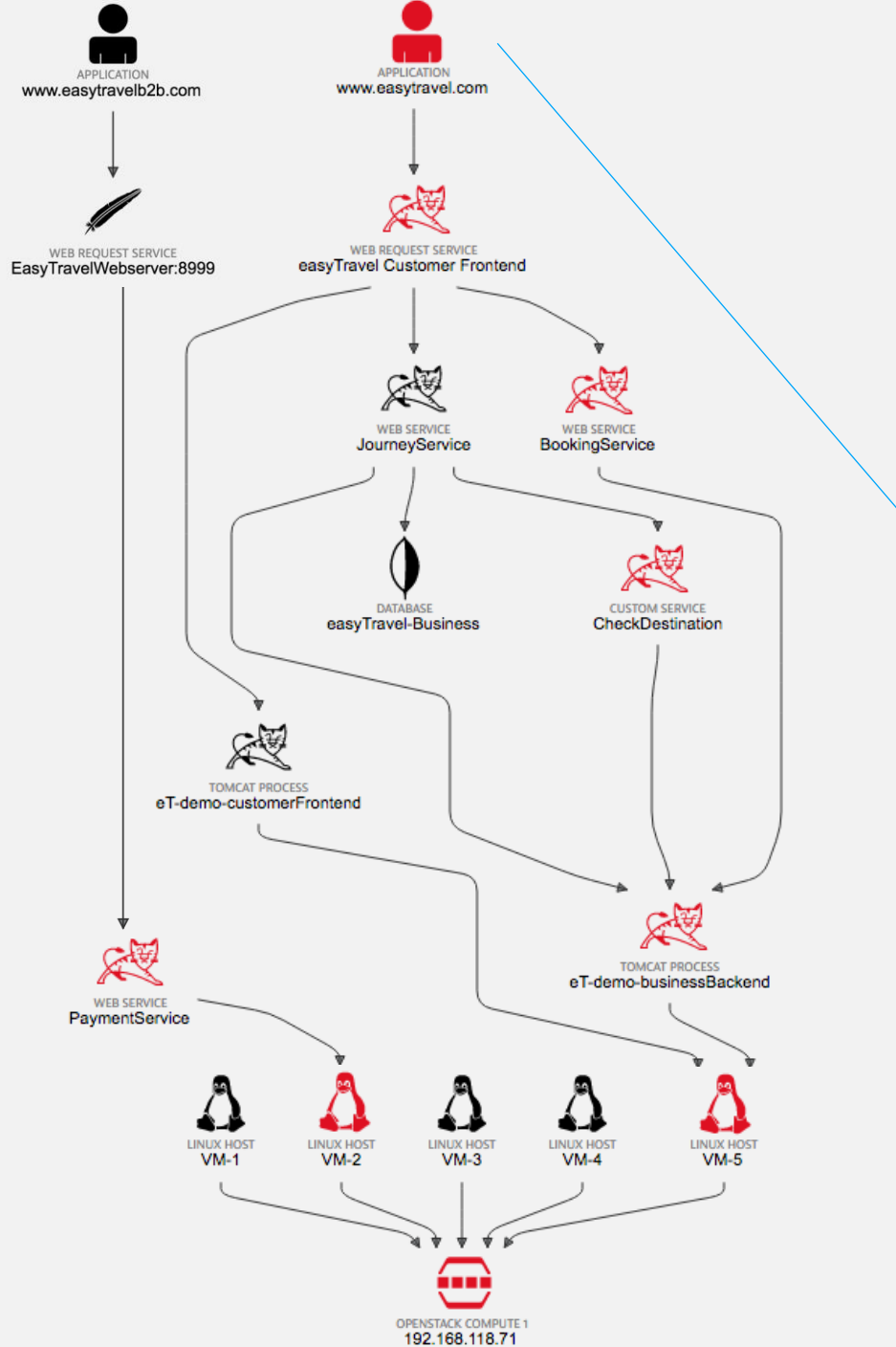
Z

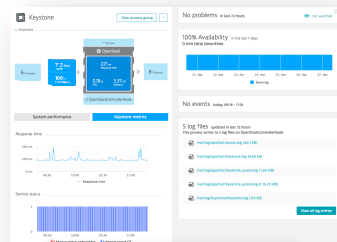
Host CPU > 90%



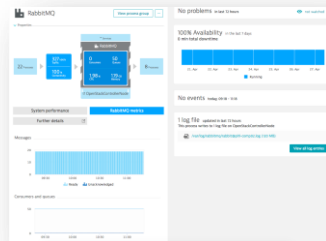




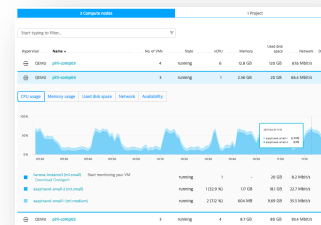




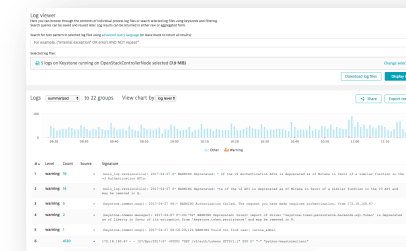
OpenStack service availability/performance



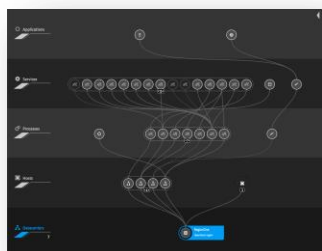
Supporting services



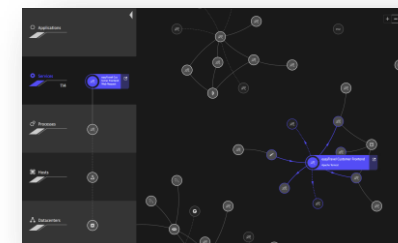
Resource capacity and utilization



Log analytics



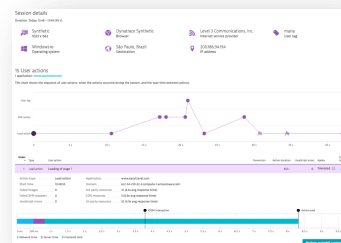
Dependencies



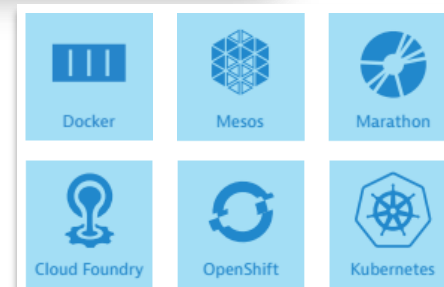
Applications running on top



Correlation of metrics/events/data

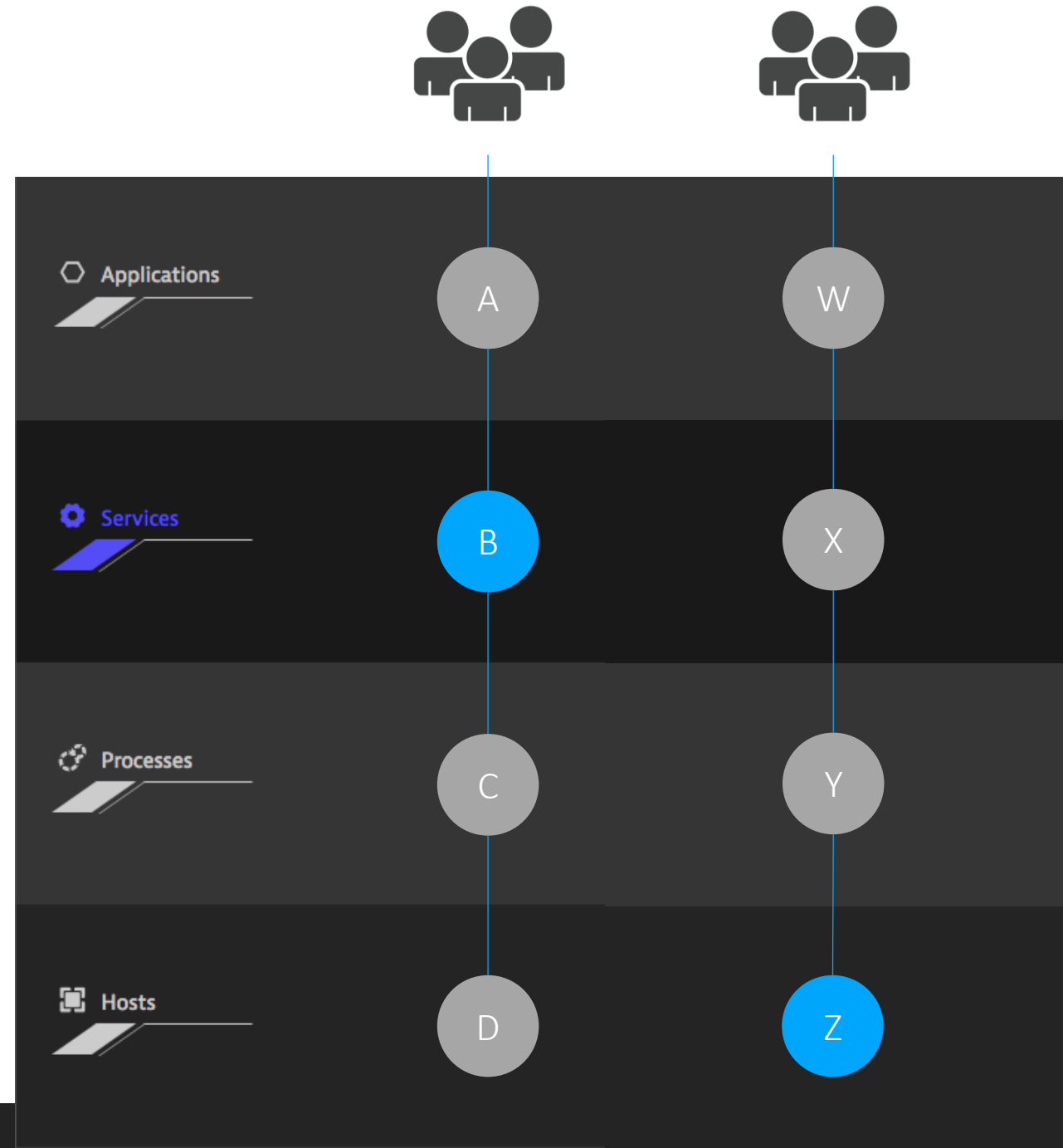


Real user monitoring, UX affects \$





PaaS



This is NOT a
REGULAR SIZE
application
environment!



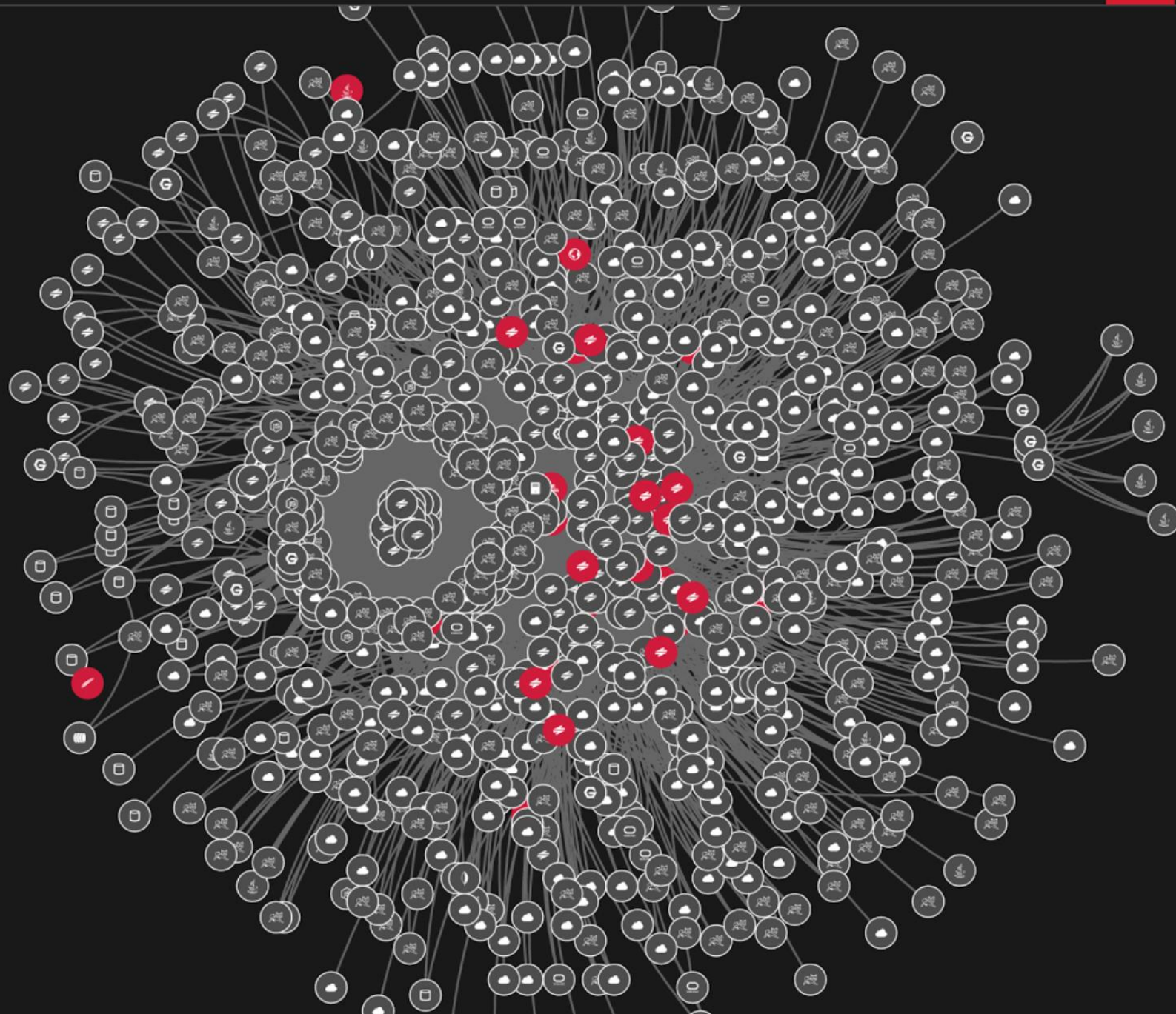
 Applications
 9

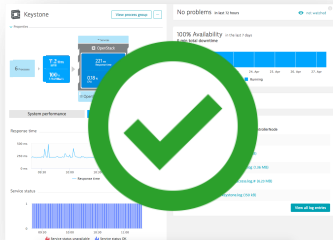
 Services
 30/3304

 Processes
 3/10424

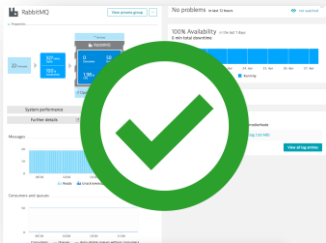
 Hosts
 142

 Datacenters
 7

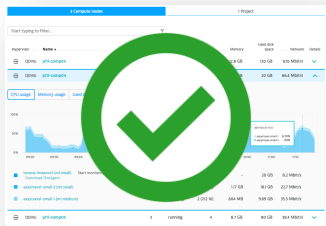




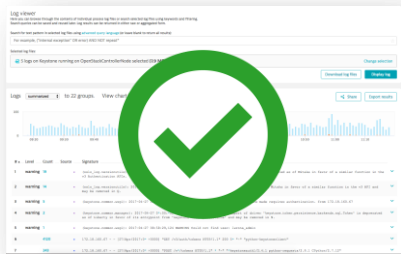
OpenStack service availability/performance



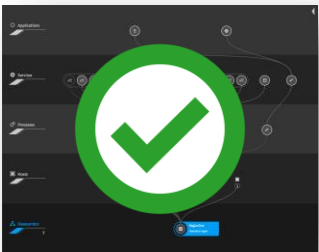
Supporting services



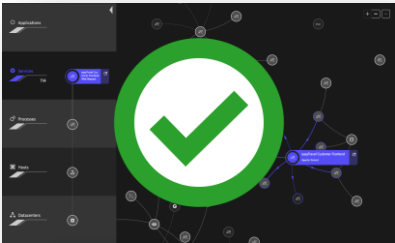
Resource capacity and utilization



Log analytics



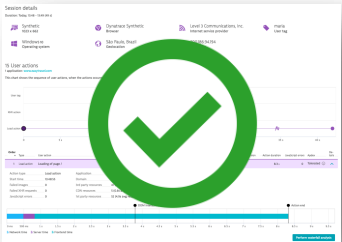
Dependencies



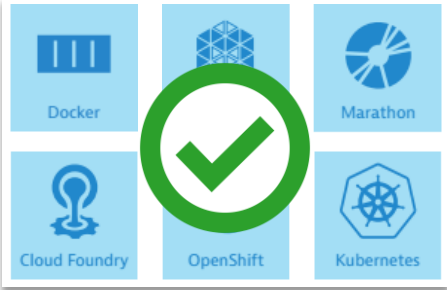
Applications running on top



Correlation of metrics/events/data



Real user monitoring, UX affects \$



PaaS

Questions?



Katalin Varga

Katalin is a huge Dynatrace fan who does content marketing. She is enthusiastic about fostering new relationships and strengthening the Dynatrace brand in the marketplace. She has a strong affinity for yoga, guitar music, and Dynatrace's [OpenStack monitoring](#).

Six mistakes in your OpenStack monitoring process...and how to fix them

by [Katalin Varga](#) on July 13, 2017 in [Cloud and microservices](#)

OpenStack monitoring beyond the Elastic Stack – Part 2: Monitoring tool options

by [Katalin Varga](#) on June 27, 2017 in [Cloud and microservices](#), [Latest news](#)



OpenStack monitoring beyond the Elastic Stack – Part 3: Monitoring with Dynatrace

by [Katalin Varga](#) on July 5, 2017 in [Cloud and microservices](#)

OpenStack monitoring beyond the Elastic Stack – Part 1: What is OpenStack?

by [Katalin Varga](#) on June 21, 2017 in [Cloud and microservices](#), [Latest news](#)

[dynatrace](#)

<https://www.dynatrace.com/blog/>

Start my free 15-day Dynatrace trial!

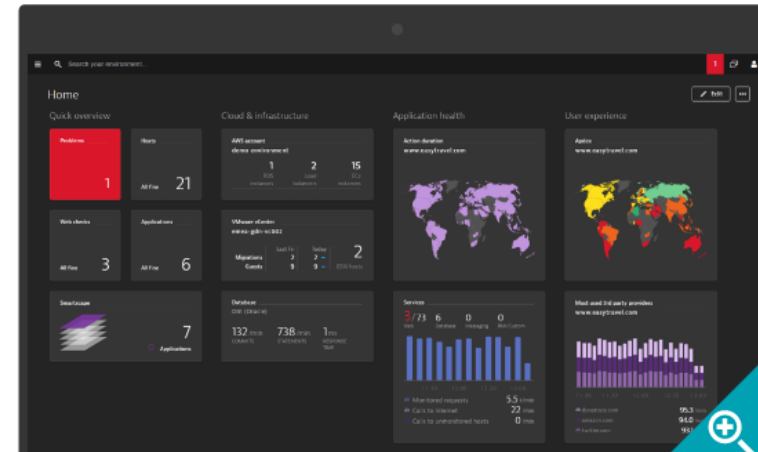
Your email address

Start free trial

No credit card required

Get started now with Dynatrace SaaS or [contact us](#) for Dynatrace on-premises!

- ✓ Full stack availability and performance monitoring
- ✓ Smart analysis and alerting powered by artificial intelligence
- ✓ Deployable as SaaS, or keep your data on-premises
- ✓ Easy monitoring with no configuration
- ✓ Real-time support via in-product-chat



Start my free 15-day Dynatrace trial!

Your email address

Start free trial

No credit card required

<http://bit.ly/2qzieL0>

Get started now with Dynatrace SaaS or [contact us](#) for Dynatrace on-premises!

Free 15-day Trial

- ✓ Full stack availability and performance monitoring
- ✓ Smart analysis and alerting powered by artificial intelligence
- ✓ Deployable as SaaS, or keep your data on-premises
- ✓ Easy monitoring with no configuration
- ✓ Real-time support via in-product-chat



Thank you!

ありがとう!


Danke!

【お問合せ先】

〒102-0093 東京都千代田区平河町2-16-1 平河町森タワー
株式会社ラック Dynatrace事業推進部

E-mail : dt-marketing@lac.co.jp

本セッションはDynatrace合同会社と株式会社ラックの共催で行いました。

A stylized illustration of a person sitting on a bench. The person is represented by a white circle head and a white torso. The bench is dark blue with horizontal slats. A dark blue water bottle is on the ground next to the person's legs. A large white speech bubble is positioned above the person's head, containing the text 'Life without monitoring is like a box of chocolates. You never know what you get.' The background is a solid blue color with stylized white clouds in the upper right corner.

Life without
monitoring is like a
box of chocolates.
You never know
what you get.